

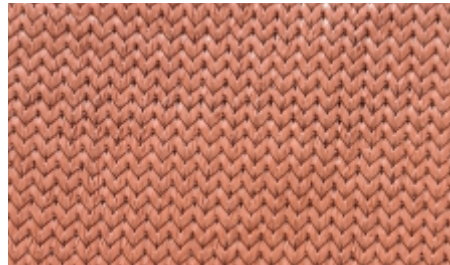
A close-up photograph of a dark blue, textured fabric surface covered with numerous clear, spherical water droplets of varying sizes. The droplets are in sharp focus, reflecting light and showing the underlying fabric texture. The background is a soft, out-of-focus blue. A semi-transparent dark blue rectangular box is overlaid on the right side of the image, containing white text.

DRI-Z
WATERPROOF
FABRIC

STANDARD COLOURS



DESERT SAND
 UV: 92%
 SHADE: 80%



TERRACOTTA
 UV: 91%
 SHADE: 86%



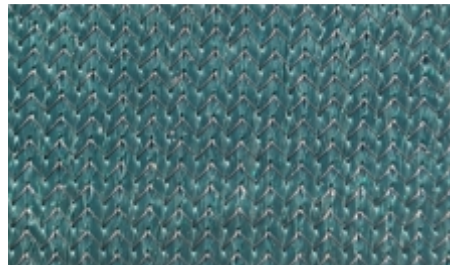
ARIZONA
 UV: 91%
 SHADE: 86%



SILVER
 UV: 93%
 SHADE: 88%

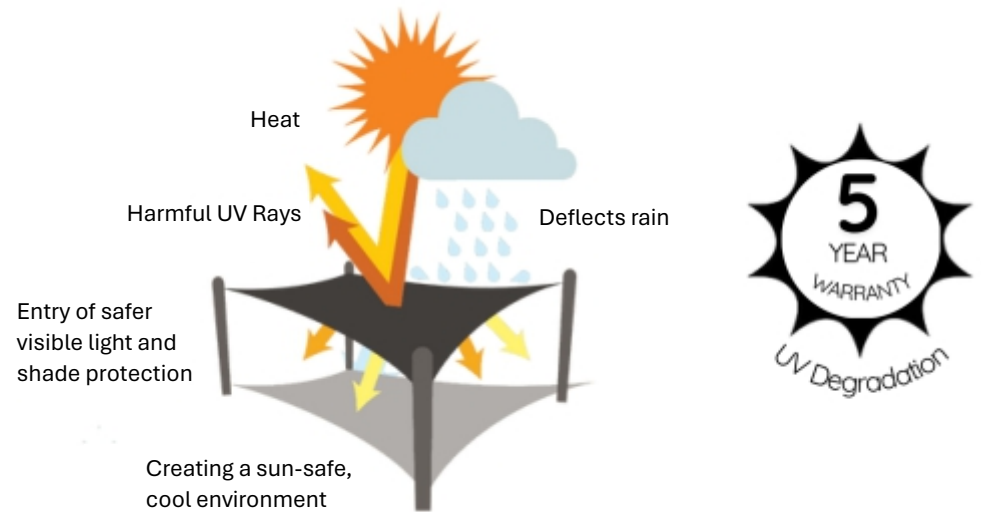


ROYAL BLUE
 UV: 93%
 SHADE: 92%



FOREST GREEN
 UV: 97%
 SHADE: 93%

DRI-Z provides protection from the sun, wind and rain while filtering harmful UV-Radiation and allowing natural light transmission. Through its advanced waterproof coating DRI-Z will allow your shade sail project to offer All weather protection for a range of outdoor entertainment and alfresco spaces.







All Weather Protection



Great Heat and Glare Reduction



High Tensile Strength



Proven Durability and Longevity



High UV-R Protection (Up to 97%)



Easy Care and Maintenance



Fire Rated Fabric



Safe Filtered Light Transmission



100% Recyclable

TECHNICAL PROPERTIES	TEST METHOD	RESULT
----------------------	-------------	--------

Weight: 280gms

STRENGTH CHARACTERISTICS		
--------------------------	--	--

Typical Burst Strength Range kPa	SABS 1703 : 2003	240-270 kPa
Minimum Specified Burst Ratio kPa per gram of fabric	SABS 1703 : 2003	1.20
Mean Burst Ratio	kPa per gram of fabric	1.35
Typical Burst Strength Range kPa	2001.2.4-1990 Method B	2100 – 2500 kPa
Mean Break Strength - Weft	2001.2.3.1-2001	900 N
Mean Break Strength - Warp	2001.2.3.1-2001	450 N
Wind Tunnel Tests	conducted by CSIR (SA)	>200 Km/h

RECOMMENDED MAINTENANCE SCHEDULE

MAINTENANCE	CONDUCTED BY	FREQUENCY	AT THE COST OF	IMPORTANCE
Annual Maintenance	Shadeports Plus Technician	As required	Owner / By arrangement with SPP Maintenance Dept.	Maintaining your shade sails lengthens the life to 15 years +.
Re-tension	Shadeports Plus Technician	As required	Owner	Shade Sails which are loose are more prone to damage. Without optimum tension on your shade sails, damage can occur to the fabric and support structure. Rectify immediately if this occurs.
Re-stitching	Shadeports Plus Technician	As required	Owner	Over the years the stitching can give way due to being broken down by the sun.
Cleaning	Shadeports Plus Technician / Owner	Recommended every 6-12 months or as required	Owner	Cleaning of the Z25 Fabric ensures all environmental residues are removed to increase the life of the fabric, while reducing the likelihood of stains or growth (such as mould) on the fabric.



SHADEPORTS PLUS has been the leading provider of shade solutions in Cyprus for over 20 years, servicing a diverse range of consumers including hotels, resorts, marinas, public and private organisations, educational institutions, businesses, and individual homes.

As Cyprus' leading supplier of UV-protective shades, our extensive shade product line includes carports, pergola canopy covers, shade sails, retractable awnings, durable shade umbrellas, windbreaker screens and roller blinds. Whether you have an existing structure that requires a canopy cover or in need of a customised structure built and covered all at once, SHADEPORTS PLUS has the solution for you.

If you need to plan a larger commercial project, or simply looking to rejuvenate your garden, courtyard, or poolside area, or if you have an existing structure that requires a canopy cover or a customised structure built and covered all at once, SHADEPORTS PLUS has the solution for you. For over two decades, we have been the preferred choice for protective shades, and we are proud of our portfolio of clients who have believed in our product from the very beginning.

Our success is attributed to our professional services, which range from design and manufacturing to installation and handover, our adaptability to any work environment, attention to customer needs, and our ability to transform our clients' thoughts and ideas into a tangible vision. r entertainment and alfresco spaces.

Shadeports Plus Ltd.
P.O. Box 62777, Pafos 8068, Cyprus
Plot 35B Agia Varvara Industrial Area,
Agia Varvara , Paphos 8068, Cyprus

T. 70 000 411
E. info@shadeportsplus.com
www.shadeportsplus.com